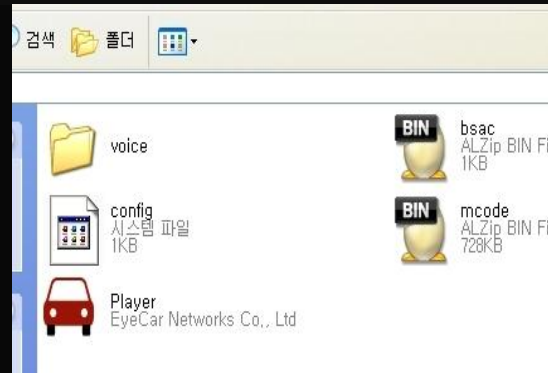




1> Please store data to PC as a back up first and format SD CARD.



2> Please store New firmware(bsac.bin & mcode.bin), PC viewer file (player & config) and voice folder at the top level directory of the formatted SD CARD.



3> Please insert the SD CARD into the product



4> Please turn on the product. The firmware update is proceed automatically with voice guide "Update mode"



5> After firmware update mode is finished, the product will be reboot. Then, please turn off product for 10 seconds. Please start PC viewer upgrade by turn on the product with pressing (-) button. PC Viewer upgrade will be proceeded with voice guide "Update Mode"



6>After finishing PC viewer update, the product will be reboot. Then please turn off product for 10 seconds. Please start Voice Guiding update by turn on the product with pressing (+) button. Voice Guide update will be proceeded with voice guide "Update Mode".